

Country of Origin : China
 Operating Temperature : 0 ~ 40° C
 Dimension : 117 x 62 x 26 mm
 Approvals / Marks : UL, c-UL, TÜV, CB, CE, BSMI

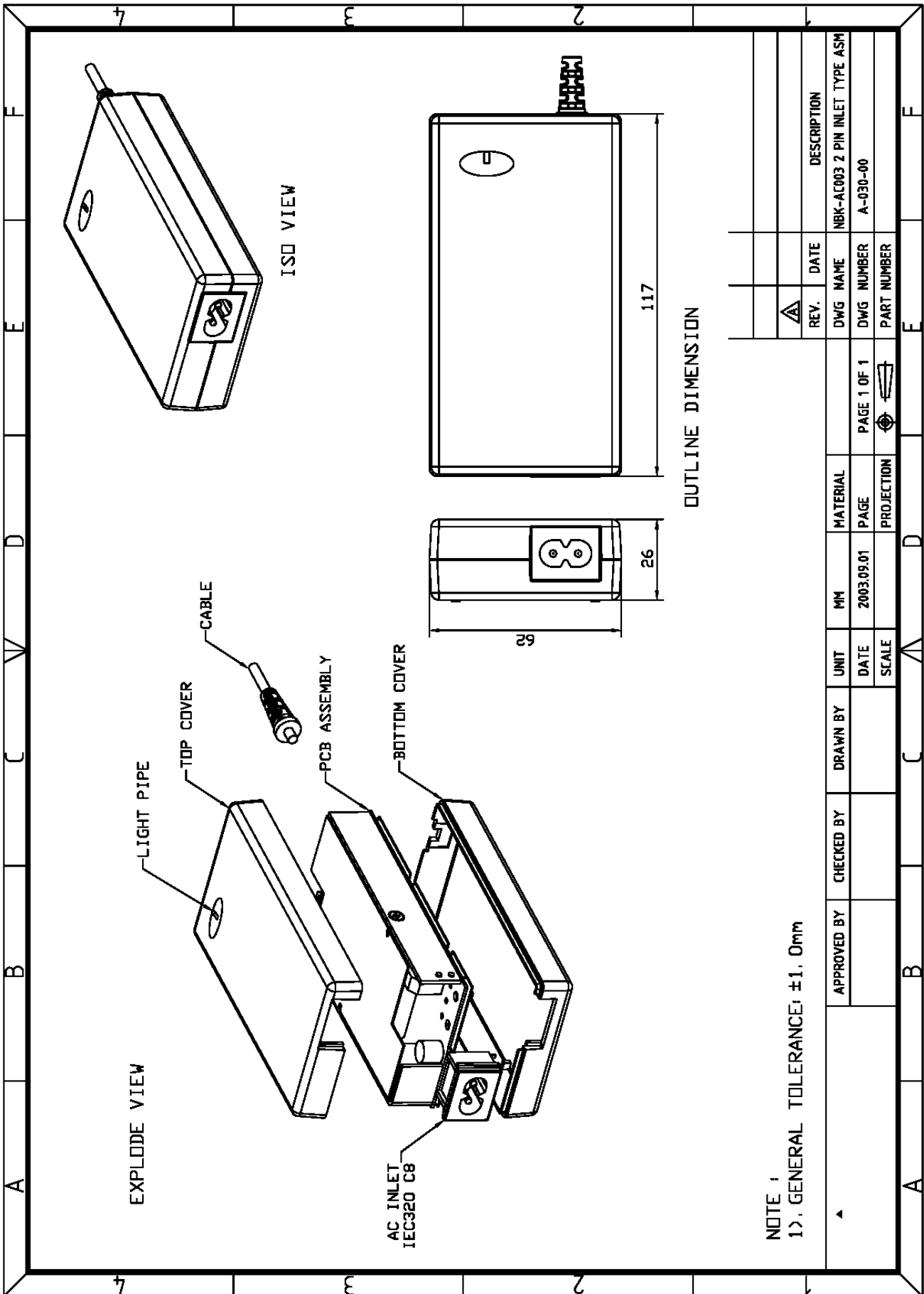
**Features:**

Desktop Type with IEC320-C8 (2p) / IEC320-C6 (3p)
 No Load Standby Power : 0.25 ~ 0.75Wmax
 Over voltage, over load, short circuit protection & auto recovery
 Compact Size / Low Cost and Light Weight
 High Efficiency design / Attractive Appearance/ High Performance
 1 year warranty

Specification:

MODEL	MODEL	OUTPUT				
IEC320-C8 (2p)	IEC320-C6 (3p)	Voltage		Load max.	Max. Output Power	
ACML-01	ACML-21	5V		7A	35W	
ACML-02	ACML-22	6V		7A	42W	
ACML-03	ACML-23	5~7V		35W	35W	
ACML-04	ACML-24	12V		4A	48W	
ACML-05	ACML-25	12V		5A	60W	
ACML-06	ACML-26	9~12V		45W	45W	
ACML-07	ACML-27	15V		4.2A	63W	
ACML-08	ACML-28	16V		4.2A	67W	
ACML-09	ACML-29	9~12V		65W	65W	
ACML-11	ACML-31	18V		3.85A	69W	
ACML-12	ACML-32	19V		3.6A	68W	
ACML-13	ACML-33	20V		3.45A	69W	
ACML-14	ACML-34	18~23V		68W	68W	
ACML-15	ACML-35	24V		2.9A	70W	
Dual Output IEC320-C6 (3p)		main	aux	main	aux	
ACML-51		5V	12V	2A	2.2A	10W + 26.4W
ACML-52		5V	12V	-	-	-10W + -26W
INPUT	Voltage	90 ~ 264VAC				
	Frequency	47 ~ 63 Hz				
	Current	-				
	Inrush Current	30A@115VAC / 60A@230VAC input				
PROTECTION	Overload	Yes, pulsing mode, auto recovery				
	Over Voltage	Yes				
	Short Circuit	Yes				
OTHERS	Setup time	< 250ms @ 110VAC				
	Rise time	< 50ms @ 110VAC				
	Holdup time	> 10ms @ 110VAC				
Environment	Temperature	Operating: 0 ~ 40°C / Storage: -40 ~ 85°C				
	Humidity	10% ~ 90% RH				
Connection	Input	IEC320-C8 or IEC320-C6				
	Output	Plug: standard: 5.5 x 2.1 x 9.5 mm or customer requirement / Cable: 120 cm (typical) or requirement				
M.T.B.F.		> 50K hours				
SAFETY		UL / c-UL / TÜV / CB / BS / BSMI				
EMC	EMI	meets: EN55022 / FCC Part 15 Class B / CISPER22 Class B				
	EMS	meets: EN55024				
WEIGHT		N.W.: 0.3 kg				

ACML series



Dimension: 117mm x 62mm x 26mm

All measurements in millimeters [mm]

ACML series

