

STD 1233PA

Desktop

40W

Country of Origin : China
Operating Temperature : 0 ~ 40° C
Dimension : 115 x 53 x 38 mm
Approvals / Marks : UL / CUL / GS / PSE / BSMI / CB



Features:

Universal range 90 ~ 264VAC / 47~63Hz

Over Voltage, Short Circuit & Over Current Protection

CEC Level IV

1 year warranty

Specification:

		OUTPUT						
OUTPUT	MODEL	Voltage	min. Load	max. Load	Tolerance	Ripple & N.	Efficiency	Max. Power
	STD 1233PA	12V	0A	3.3A	±5%	100mV	83.11% min.	40W
INPUT	Voltage	90 ~ 264VAC						
	Frequency	47 ~ 63Hz						
	Current (rms max)	1.1A max						
	Leakage Current	< 0.25mA						
	Inrush Current	< 60A @ 230VAC / < 30A @ 115VAC						
PROTECTION	Over Current	Iout (105%~182%)						
	Over Voltage	> 110 ~ 150% power supply will shutdown latch						
	Short Circuit	Automatic recovery after short-circuit fault being removed						
	Input	1.6A fuse against power line surges and any abnormal conditions						
	No Load Operation	Yes , to protect the power supply and system from damage						
OTHERS	Cooling	Free air convection						
	Withstand Voltage	I/P-O/P: 3KVAC for 1 Minute, I/P-FG: 1.5KVAC for 1 Minute						
	Insulations Resistance	I/P-O/P: 10 MOhm for 500Vdc, I/P-FG: 10 MOhm for 500Vdc						
	Power Consumption	Pi ≤ 0.5 W (@ 240Vac & No Load)						
Environment	Temperature	Operating: 0 ~ 40°C / Storage: -20 ~ 60°C						
	Humidity	Operating: 20% ~ 80% RH / Storage: 10% ~ 90% RH						
Connection	Output	Plug: standart 5.5 x 2.1 x 11mm (spring loaded center) or customer requirement / Cable: 180cm (6ft.)						
	Input	IEC 320-C8						
MTBF		> 50K hours						
SAFETY		TÜV EN60950-1 :2001 / CE / CB						
EMI		CE / FCC Class B Conduction Radiation Met.						
WEIGHT		N.W.: 0.287 kg						

STD 1233PA

Weight : 278 g Typical

Cable Type : Black UL2468 AWG18

(Wire + Plug)

Plug : $\phi 5.5 * \phi 2.1 * 10\text{mm}$

(Tuning Fork & Cannelure)

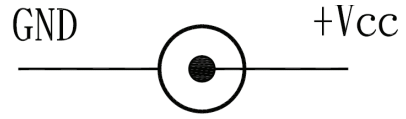
Cable Drawing No. :

Cable Length : 1500mm

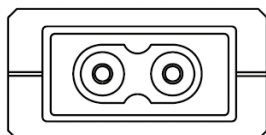
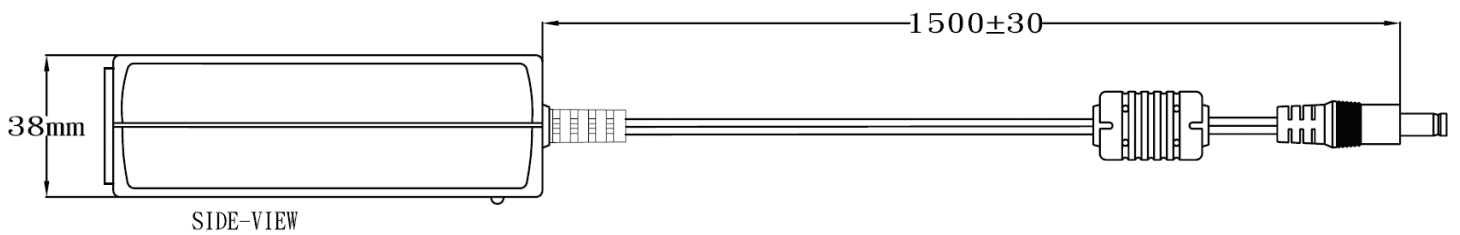
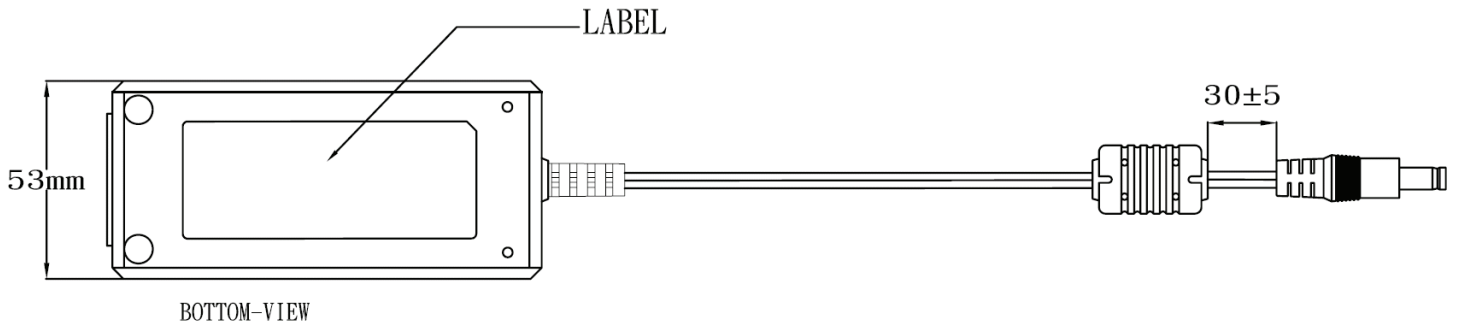
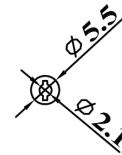
Case Dimension : 115mm(L)*53mm(W)*38mm(H)

Material Flammability : UL 94V-0

External Apperance : As drawing below (Scale \rightarrow mm)



Output Cable Plug Pin Assignment



FRONT-VIEW