



讯源集团
XING YUAN GROUP



自2008年生产
各类电源适配器、PD快充、LED驱动、变压器、PCBA

Professional Manufacturer for
Power Adapter, PD Charger, LED Driver, transformer, PCBA
Since Year 2008

www.dgxingyuan.com

董事长致辞 A Letter from CEO

讯源电子成立于2008年，正值经济形势变幻莫测之时，公司各位股东高瞻远瞩，抓住了非常难得的发展机遇。在发展的过程中，我们不断提升公司的综合竞争力，使公司的发展一直处于高速、健康、稳定的状态。目前，我们不仅创建了自有电源品牌“XY”，在国内外市场上取得了良好的成绩，而且在美洲、欧洲等高端国际市场也赢取了一席之地。

在公司发展的同时，我们同样重视员工个人发展与社会责任，坚持“任人唯贤”的用人原则，为员工设计多元化的职业发展路线，提供广阔的发展平台，努力培养出更多人才、创造出性能更优越、更环保、更节能的产品来回馈社会。

昨天，我们辗转奔波、夜以继日，在大浪淘沙时坚若磐石；今天，我们凝聚了无数员工辛勤的汗水、无数协作厂商的鼎力支持和社会各界人士的关怀，在珠三角、湖南省等地开枝散叶；明天，我们鹰击长空，在商海大潮里乘风破浪，创造讯源新的辉煌！

Xing Yuan Electronics Co., Ltd was established in 2008 (economic crisis). The company shareholders took the very previous opportunity along with many difficulties. For so many years, we have been pushing ourselves to be stronger and stronger. Our comprehensive competition capabilities keep growing rapidly under a very steady and also healthy condition.

We pay attention to our employees' personal development as well as social responsibility. A broad platform has been offered to our employees to create their careers by various means. More talents and more environmentally friendly and energy-efficient products will be brought to the society with our continuous efforts.

We worked diligently in defiance of difficulties in the past; Now we are expanding our business to Hunan Province by keeping growing in Pearl River Delta at the same time; In future, we will create more achievements and successes. Thanks a lot for the support and cooperation from by our dearest customers, suppliers and all other communities around us.

总经理
General Manager



公司沿革 | Company Evolution

2008

选址东莞市塘厦镇，成立东莞市讯源电子科技有限公司，厂房面积约4500平方米。
Establishment of Xing Yuan Electronics Co., Ltd, (Located in Tangxia Town of Dongguan City; with factory area of 4500 M²)

2010

因扩大规模生产，工厂迁址东莞市石排镇，厂房面积约12000平方米，同时导入开关电源项目，年销售额增长至3000万元。
Factory Re-location (Factory moved from Tangxia Town to Shipai Town in Dongguan City; Start developing and producing Switching Power Supply; Factory Area increased to 12000 M² with yearly turnover up to 5 million USD)

2014

成立惠州市讯源电子科技有限公司，同年公司营业额突破1.2亿。
Establishment of Branch Company Huizhou Xun Winr Electronics Co., Ltd (Located in Huizhou City; Yearly turnover of both Dongguan factory and Huizhou Factory up to 20 million USD)

2015

成立湖南邵阳讯源电子科技有限公司，占地55余亩，规划建设面积30000多平方米。
XY POWER SUPPLY CO., LTD established at 2015, with covering an area more than 55 acres with a building area of 30000 square meters.

2018

湖南邵阳工厂正式投产，新增自动化生产设备，同年公司总营业额突破3亿元。
In 2018, XY Power Supply Limited officially put into operation. with automation production line, the sales revenue exceeded US\$50 Million in the same year.

2021

全面升级自动化，提升产能，营业额再创新高。
Fully upgrade automation,, improve production capacity.

2025

筹划布置海外生产基地(越南)和MES追溯系统
Planning overseas production base (Vietnam) and MES traceability system.



集团概要 | About Us

讯源电子科技有限公司成立于2008年，专业从事各类电源适配器、充电器、变压器以及LED驱动电源的研发、生产和销售，产品广泛应用于各类电子电器、医疗、数码、照明、礼品和玩具等领域。自成立以来，发展迅速，业绩年年创新高，并拥有了自主品牌“XY”，在不断提升自我的同时，也在持续提升产品的综合竞争力。

公司总部位于广东省东莞市，现设有占地面积12000平方米的东莞市讯源电子科技有限公司，占地面积8000平方米的惠州市讯源电子科技有限公司，并于2018年10月投建了占地面积30000平方米的湖南邵阳讯源电子产业园，以及导入了自动化生产线。

公司已通过ISO 9001 SGS国际质量体系认证，始终坚持节能环保的理念，产品相继通过了CE、GS、CB、ETL、UL、UKCA、SAA、RCM、PSE、KC、CCC、CQC、BIS等多国安规认证，并在东莞和湖南均设有自主研发实验室，拥有恒温恒湿箱、防水测试仪、ROHS检测仪、EMI、ESD、雷击、传导、球压、冷热冲击仪等相关齐全的检测与测试设备。未来，我们还将继续紧跟市场需求，持续加大投入更多新型高科技的设备，为客户提供更高竞争力的产品与服务。

我们将秉承“培养人才、节能环保、回馈社会”的企业使命，牢记“创造国际优质品牌，打造讯源百年基业”的企业目标，全力以赴为实现“让所有员工开心工作，快乐生活；让更多优秀人员成为企业家，服务于社会”的企业愿景而努力奋斗！

Xing Yuan Electronics Co., Ltd was established in Aug, 2008. Xing Yuan produce Ac Adapters, chargers, led drivers and transformers both indoor and outdoor. Products are widely used for electrical devices, medical, IT, Lighting, gifts and toys etc. With rapid development, it's well know as own brand "XY".

The headquarter located in Dongguan, with area of 12000 square meters. Meanwhile, we have branch factory located in Huizhou since 2014, which is "Xun Winr", It had about 8000 square meters. Meanwhile, XY Power Supply Limited was established since year 2018, with total area 30000 Square meters, it's equipped with automatic production line.

Our company with ISO9001:2015 quality system since 2011, products meet ECO design and RoHs compliance. Meanwhile, Our products are certified by CE, GS, CB, ETL, UL, UKCA, SAA, RCM, PSE, KC, CCC, CQC, BIS. Both Hunan and Dongguan are equipped with own Lab to make sure products are comply with safety standards. Machine like cold and hot shock tester, Burning tester, RoHs Tester, Conduction Tester, Surge tester, Ball pressure tester, EMC, ESD Etc. Xing Yuan strictly require for continuous improvement of talents, technology, management ability and competitiveness.

Our company's task is to " Train staff more professional, protect the environment and serve the society" Our target is to "Create quality products with a foundation lasting more than 100 years "In order to" make every employee happy working in Xing Yuan and Help more good talents becoming helpful to the society, " we will continue with the fight and competition.

东莞工厂 | Dongguan Factory



东莞市讯源电子科技有限公司

- 成立于2008年
- 工厂面积12000平方米

Xing Yuan Electronics Co.,Ltd

- Founded at Year 2008
- Factory Area 12000m²

邵阳工厂 | Shaoyang Factory



邵阳市讯源电子科技有限公司

- 成立于2015年
- 工厂面积30000平方米

XY Power Supply Limited

- Founded at Year 2015
- Factory Area 30000m²

惠州工厂 | Huizhou Factory



惠州市讯源电子科技有限公司

- 成立于2014年
- 工厂面积8000平方米

Xun Winr Electronics Co.,Ltd

- Founded at Year 2014
- Factory Area 8000m²

产品应用 Application

■ 灯具 / Lighting



LED Advertising lamp



Table Lamp



Strip lights



Neon light



Eave light

■ 家电 / Electrical products



Sweeping Machine



Dust collector



Dehumidifier



Depilator



Aquarium

■ IT网通 / IT & Audio



Safety precautions



Projector



Router



Recorder machine



POS machine

■ 3C消费电子 / 3C Consumer Electronics



Mobile phone



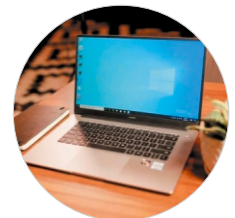
Education machine



Drone



Smart Electronics



Laptop computer

■ 其它 / Others



Outdoor power supply



Industrial equipment



Medical equipment



Electric Wheel Chair



Pet heating pad

证书 Certification



插墙式电源 6-65W / Wall-mounted Power Supply



6W-15W
52.7 × 35.7 × 47.1mm



6W-15W
52.7 × 35.7 × 63.2mm



6W-15W
52.7 × 48.8 × 55.3mm



6W-15W
52.7 × 39 × 52.4mm



18W-24W
65.4 × 39.7 × 49.6mm



18W-24W
65.4 × 39.7 × 66mm



18W-24W
65.4 × 48.8 × 52.8mm



18W-24W
68.2 × 43.3 × 54.86mm



36W
77.7 × 47.3 × 53.1mm



36W
77.7 × 47.3 × 67mm



36W
77.7 × 48.7 × 59.1mm



36W
79.7 × 54.5 × 55.7mm



65W
101.3 × 52.8 × 57mm



65W
101.3 × 52.8 × 72.2mm



65W
101.3 × 52.8 × 64.3mm



65W
101.3 × 51.7 × 58.66mm

- ◆ Input: 100-240V, 50/60Hz
- ◆ Output: 4.5-36VDC 0.1-5.0A
- ◆ 满足/Meet: CE, GS, CB, ETL, UL, UKCA, SAA, RCM, KC, PSE, BIS, CCC, CQC, RoHS, REACH EMC ERP
- ◆ ERP II/COC/CEC /DOE/Nrcan/GEMS(MEPS) level VI
- ◆ 认证标准/Safety Standard: EN61558/EN62368-1/EN61347/UL1310/GB19510/GB4943

插墙式电源 6-60W / Wall-mounted Power Supply



6W-15W
59 × 28.3 × 60.61mm



6W-15W
50.6 × 29 × 57mm



6W-15W
50.6 × 29 × 57mm



6W-15W
50.6 × 29 × 77.2mm



24W
60.9 × 29.3 × 57mm



24W
60.9 × 29.3 × 57mm



24W
60.9 × 29.3 × 77.1mm



36W
69.4 × 30 × 61.8mm



36W
69.4 × 30 × 61.8mm



36W
69.4 × 30 × 82.8mm



36W
69.4 × 49 × 75mm



60W
75.6 × 32.5 × 71mm



6W
49.8 × 35.7 × 61.2mm



12W
58.4 × 40.6 × 64.4mm



12W
58.4 × 48.8 × 56.5mm

- ◆ Input: 100-240V, 50/60Hz
- ◆ Output: 4.5-36VDC 0.1-5.0A
- ◆ 满足/Meet: CE, GS, CB, ETL, UKCA, SAA, RCM, KC, PSE, CCC, CQC, RoHS, REACH EMC ERP
- ◆ ERP II/COC/CEC/DOE/Nrcan/GEMS(MEPS) level VI
- ◆ 认证标准/Safety Standard: EN61558/EN62368-1/EN61347/UL1310/GB19510/GB4943

桌面式电源 6-400W / Desktop Power Supply



6-15W
70.2 × 43.7 × 30.7mm



24W
82.9 × 49.9 × 31.2mm



36W
90 × 47.5 × 29mm



50W
110.5 × 52.7 × 36.5mm



60W
116.5 × 51.7 × 35mm



65W
108 × 45.5 × 31mm



90W
140 × 57.5 × 35mm



120-150W
167 × 66.2 × 39.2mm



150W
172 × 72 × 33mm



- ◆ Input: 100-240V, 50/60Hz
- ◆ Output: 5-57VDC 0.1-12.5A
- ◆ 满足/Meet: CE, GS, CB, ETL, UL, UKCA, SAA, RCM, KC, PSE, BIS, CCC, CQC, RoHS, REACH EMC ERP
- ◆ ERP II/COC/CEC/DOE/Nrcan/GEMS(MEPS) level VI
- ◆ 认证标准/Safety Standard: EN61558/EN62368-1/EN61347/UL1310/GB19510/GB4943

可换头 6-36W / Interchangeable Power Supply



6W
58 × 36.5 × 33.1mm



12W
68.6 × 42.3 × 36.4mm



24W
80.6 × 55.2 × 39.6mm



36W
81.3 × 55.8 × 43mm



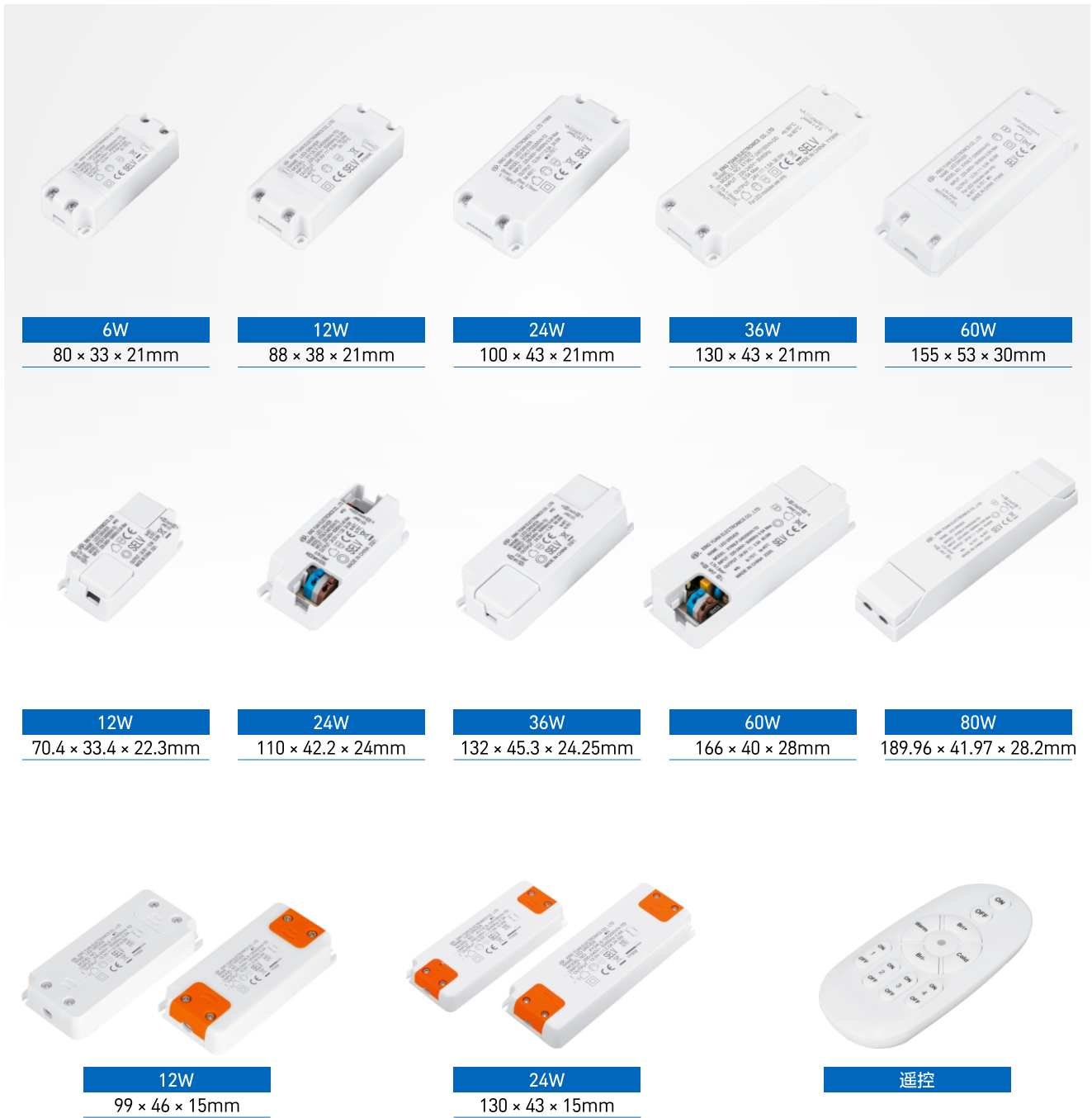
13W
68.4 × 40.7 × 41.3mm



6W-12W
58.1 × 40.19 × 33.1mm

- ◆ Input: 100-240V, 50/60Hz
- ◆ Output: 3-36VDC 0.1-5.0A
- ◆ 满足/Meet: CE, GS, CB, ETL, UL, UKCA, SAA, RCM, KC, PSE, BIS, CCC, CQC, RoHS, REACH EMC ERP
- ◆ ERP II/COC/CEC/DOE/Nrcan/GEMS(MEPS) level VI
- ◆ 认证标准/Safety Standard: EN61558/EN62368-1/EN61347/UL1310/GB19510/GB4943

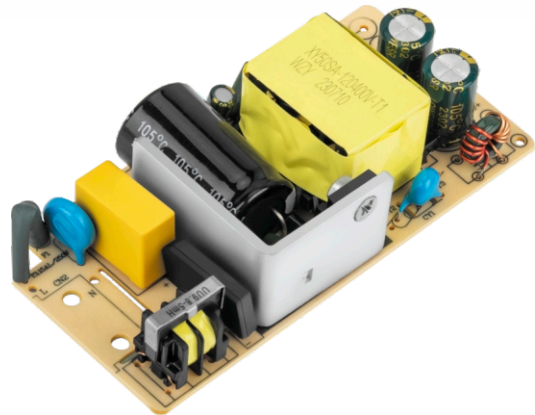
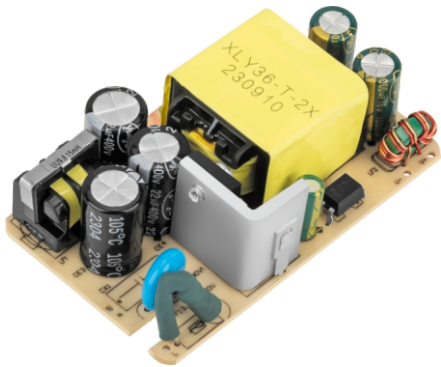
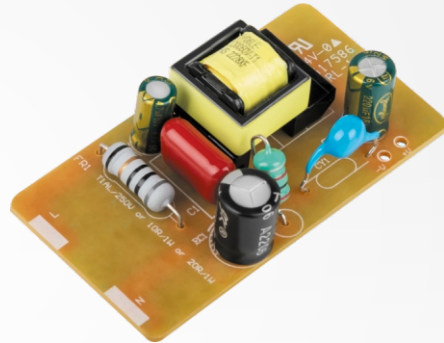
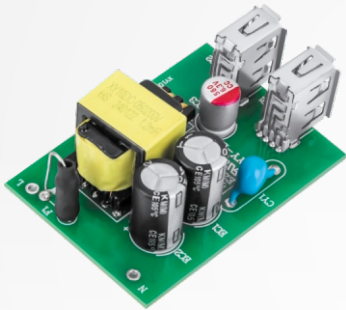
内置电源 6-150W / Built in LED Driver



- ◆ 高PF无频闪/High PF flicker free
- ◆ Input: 100-240V, 50/60Hz
- ◆ Output: 9-36VDC, 0.1-12.5A
- ◆ 满足/Meet: CE, GS, CB, ETL, UL, UKCA, SAA, RCM, KC, PSE, BIS, CCC, CQC, RoHS, REACH EMC ERP
- ◆ ERP II/COC/CEC/DOE/Nrcan/GEMS(MEPS) level VI
- ◆ 认证标准Safety Standard: EN61347/EN61558/UL1310/UL8750/GB19510/GB4943

电源PCBA设计开发 / OEM, ODM PCBA for Adapter

6-400W



■ PCBA方案设计

- ◆ 产品设计
- ◆ 方案开发
- ◆ 批量SMT
- ◆ PCBA生产
- ◆ 精良的产生检测设备

■ PCBA OEM, ODM

- ◆ Product design
- ◆ Scheme development
- ◆ Batch SMT
- ◆ PCBA production
- ◆ Professional testing equipment

防雨电源 / IP44 Raintight Power Supply



6W-15W
89.1 × 41.19 × 33.07mm



6W-15W
99 × 41.79mm



6W-15W
93.83 × 48.5 × 46.26mm



6W-15W
99.1 × 42.19 × 33.07mm



6W-15W
109 × 41.79mm



6W-15W
103.83 × 48.5 × 46.26mm



6W-15W
99.1 × 42.19 × 33.07mm



6W-15W
109 × 41.79mm



遥控

- ◆ Input: 100-240V or 220-240V, 50/60Hz
- ◆ Output: 3.5-36VDC, 0.1-2.0A 15W max
- ◆ 满足/Meet: CE, GS, CB, ETL, UL, UKCA, SAA, RCM, KC, PSE, BIS, CCC, CQC, RoHS, REACH EMC ERP
- ◆ ERP II/COC/CEC/DOE/Nrcan/GEMS(MEPS) level VI
- ◆ 认证标准/Safety Standard: EN61347/UL1310

■ 遥控功能

- | | |
|------------|---------------|
| (1) 自由变换 | (5) 星星闪烁带跑马变换 |
| (2) 波浪前进后退 | (6) 双灯同时渐明渐暗 |
| (3) 双跑马灯 | (7) 星星闪烁 |
| (4) 单灯渐明渐暗 | (8) 全亮 |

■ 8-Function

- | | |
|-----------------|-------------------|
| (1) COMBINATION | (5) CHASING/FLASH |
| (2) IN WAVES | (6) SLOW FADE |
| (3) SEQUENTIAL | (7) TWINKLE FLASH |
| (4) SLO-GLO | (8) STEADY ON |

防雨电源 / IP44 Raintight Power Supply



6W
60.55 × 38 × 49.3mm



6W
62.49 × 41 × 51.76mm



15W
73.7 × 39 × 48.3mm



15W
73.7 × 48.2 × 70.3mm



12W
75.99 × 54.3 × 50.9mm



24W
78.5 × 44.5 × 50.5mm



24W
87.1 × 43.5 × 75.3mm



6/12/24W
81.6 × 50 × 59.6mm



36W
87.2 × 51.3 × 54mm



36W
87.2 × 51.3 × 75.7mm



36W
87.2 × 51.3 × 60mm



36W
87.2 × 51.3 × 55.7mm



65W
103.6 × 54 × 55.5mm



65W
103.6 × 54 × 79mm



65W
103.6 × 54 × 63mm



65W
103.6 × 54 × 58mm

- ◆ Input: 100-240V or 220-240V, 50/60Hz
- ◆ Output: 4.5-36VDC, 0.1-5.0A 65W max
- ◆ 满足/Meet: CE, GS, CB, ETL, UL, UKCA, SAA, RCM, KC, PSE, BIS, CCC, CQC, RoHS, REACH EMC ERP
- ◆ REACH EMC ERP/COC/CEC/DOE/Nrcan/GEMS(MEPS) level VI
- ◆ 认证标准/Safety Standard: EN61347/UL1310

防水电源IP67 / Waterproof Power Supply IP67



15W

74 × 39.6 × 30.5mm



24W

104 × 50.1 × 34.2mm



36W

104 × 50.1 × 34.2mm



65W

129 × 56.1 × 38.5mm



90W

155 × 63.1 × 42.5mm



120W

196 × 73.6 × 46mm

- ◆ 防水等级/Waterproof level: IP67
- ◆ Input: 100-240V, 50/60Hz
- ◆ Output: 9-57VDC, 0.1-10A 150W max
- ◆ 满足/Meet: CE, GS, CB, ETL, UL, UKCA, SAA, RCM, KC, PSE, BIS, CCC, CQC, RoHS, REACH EMC ERP
- ◆ ERP II/COC/CEC/DOE/Nrcan/GEMS(MEPS) level VI
- ◆ 认证标准/Safety Standard: EN61558/EN62368-1/EN61347/UL1310/GB19510/GB4943

PD Charger (GaN)

■ PD 30W



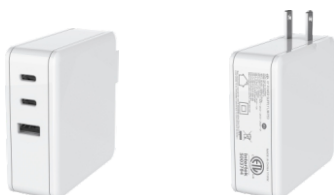
■ Interchangeable version 30W & 65W



■ PD 65W



■ PD 100W & 140W



- ◆ 多口充电智能分配/Multi-port charging intelligent distribution: 5V3A / 9V3A / 12V2.5A / 12V3A / 15V2A / 15V3A / 20V1.5A / 20V3.25A / 20V5A / 28V5A / PPS 3.3-11V@3A / 3.3-21V@3A / 3.3-21V@5A
- ◆ 安全标准/Safety standard: EN/IEC/UL 62368, GB4943
- ◆ 兼容协议/Compatible protocol
 1. USB-C1/USB-C2: PD2.0/PD3.0//PD3.1/PPS/QC4+/QC3.0/QC2.0/AFC/FCP/SCP/APPLE2.4/BC1.2
 2. USB-A: QC3.0/QC2.0/AFC/FCP/SCP/APPLE2.4/BC1.2

充电器/Charger

■ USB充电器/USB Charger



- ◆ Input: 100-240v 50/60Hz
- ◆ Output: 5Vdc 0.1-2.1A
- ◆ 安全标准/Safety standard: EN/IEC/UL 62368, GB4943

■ 车载点烟器和车载充电器/Car cigarette lighter and Car Charger



121 × 64 × 49.2mm

- ◆ 输入电压/Input Voltage:
12~24Vdc
- ◆ 点烟器输出功率/Cigarette lighter output:
80W MAX(12V)/160W MAX(24V)



96.2 × 43.4 × 29.1mm

- ◆ USB output:

 1. USB-C: DC5V3A/9V3A/12V2.5A/15V2A/20V1.5A
 2. USB-A: DC5V3A/9V2A/12V1.5A
 3. USB-C+USB-A: 5V3A 15W

■ 家居插座/Home socket



170 × 55 × 43.5mm

- ◆ AC输入/AC input: AC 120V 60HZ
- ◆ AC输出/AC output: AC 120V 60HZ
- ◆ DC输出/DC output: DC 5V 1A/2A

■ 锂电池充电器/Battery Charger



68.4 × 40.7 × 41.3mm

85 × 43.5 × 69mm

- ◆ Input: 100-240v 50/Hz
- ◆ Output: 40W Max Charger
- ◆ 恒流精度5%/Constant current Accuracy 5%
- ◆ LED Indicator

变压器 IP20 IP44 IP68 / Linear Adapter/Transformer



- ◆ Input: 100-240V, 50/60Hz
- ◆ Output: 3-24VAC 0.1-12.5A 150W max
- ◆ 防水等级/Waterproof level: IP20 IP44 IP68
- ◆ 满足Meet: CE, GS, CB, ETL, SAA, RCM, RoHS, REACH EMC ERP
- ◆ 认证标准/Safety Standard: EN61558/EN61347/UL1310

QUALITY

QUALITY

QUALITY

始终把客户和消费者的安全健康放在第一位!

Always put the safety and health of customers and consumers first!

讯源集团建立了健全有效的质量体系, 严格执行ISO质量体系标准, 所有产品均通过国际上大多数国家和地区产品认证机构的认证, 始终坚持为客户和消费者提供高品质、环保、健康、安全的产品。

Xing Yuan Group has established an effective quality system, strictly follow up with ISO quality system. All products are certified with international standards and meet with regional products certification approvals. We always adhere to providing customers and consumer with high quality , environmental, healthy, and safety products.

公司福利 | Company Benefits



- “希望之光” 爱心基金会
- 带薪培训
- 年终奖金
- 优秀员工评比

- "Light of Hope" Fund
- Paid Trainings
- Year-end Bonus
- Outstanding Employee Award



- 标兵员工评比
- 返乡交通补贴
- 生日礼物 & 庆生会
- 简易生活用品发放

- Good Example Award
- Home-returning Transportation Subsidy
- Birthday Party
- Monthly Gifts of Commodity



- 宿舍洗衣机、免费Wifi
- 年度旅游活动
- 各类文娱活动、团队活动
- 服务满1年以上, 享有年资奖励

- Available Laundry Service & Wifi
- Yearly Tourism Activities
- Other Team Activities
- 1Year+ Experience Bonus

客户服务

Customer Service

客户服务流程 Customer Service Flow



售后服务流程 After-sale Service



售后服务承诺 After sales service commitment

“XY” 品牌电源实行 “2年质保” 的售后服务政策，具体细则如下：

- 1、2年质保：电源销售给客户，出现非人为质量问题，讯源提供免费维修服务；
- 2、保修日期的确定：“XY” 品牌电源在出厂时，产品上印有生产日期，以便于客户准确计算保修期，判断产品是否在保修期内。讯源技术部门在收到需维修的“XY” 品牌电源后3个工作日内出具检测报告和处理意见。

All of "XY" branded products is subjected to "2 Years Warranty"

1. For any product failure not caused by improper usage during the production date, Xing Yuan offer the repairing service free of charge.
2. Every product from Xing Yuan has a production date on the label. This helps customer to identify the warranty period. For each repairing request from the customer, Xing Yuan will submit a report and suggestions within 3 days by receipt of the request.





企业文化 | Company Culture



■ 企业使命

培养人才、节能环保、回馈社会

■ 企业目标

创建国际优质品牌，打造讯源百年基业

■ 经营理念

销售最大(化)、经费最小(化)、诚信务实、积极创新

■ 企业愿景

让所有员工开心工作、快乐生活；让更多优秀人员成为企业家、服务于社会

■ 服务理念

客户的满意是我们的目标；
品质是我们的生命，服务是我们的寿命；
想客户所想急客户所急全心全意为客户服务。

■ Mission

Develop Individuals, Protect The Environment & Serve The Society

■ Goal

Create Quality Products with A Foundation Lasting More Than 100 Years

■ Operation Principle

Maximized Sales, Minimized Cost, Honesty, Innovation

■ Vision of The Future

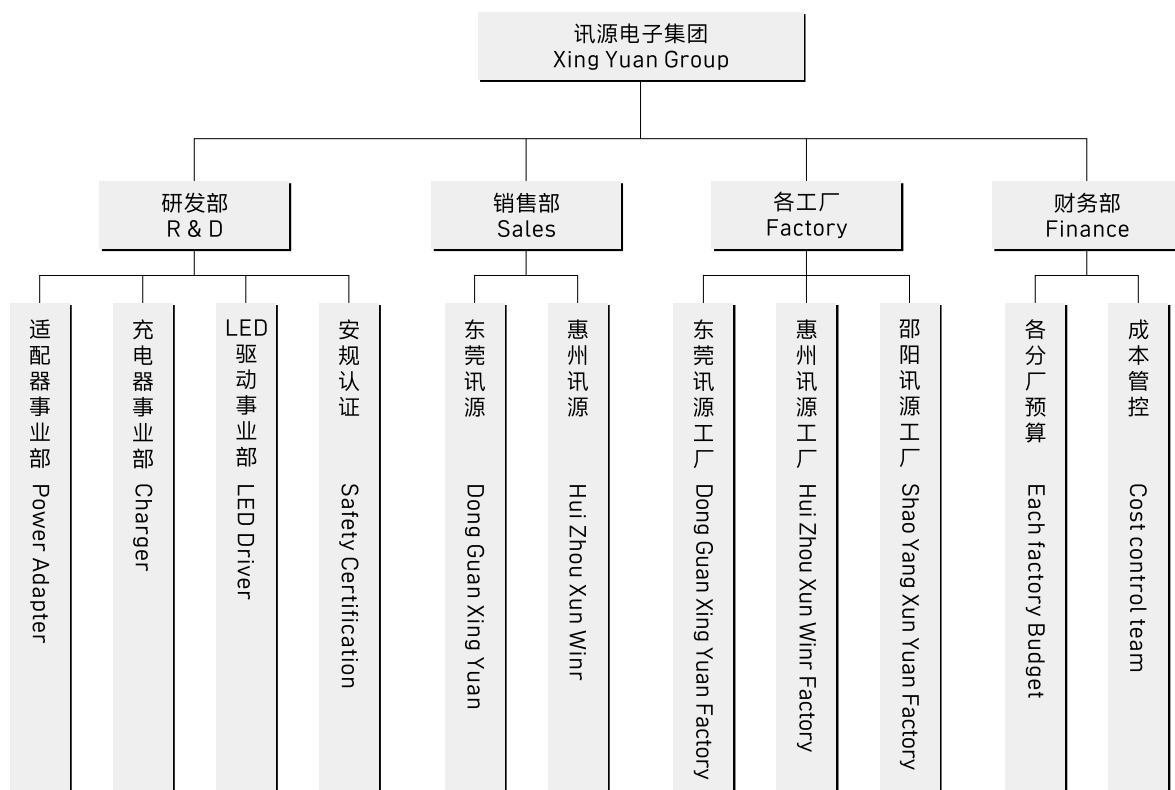
Make Every Employee Happy Working in Xing Yuan & Help More Good Talents Becoming Helpful to The Society

■ Service Philosophy

Customer Satisfaction Is Our Target;
Quality Is Our Life;
Serve with Our Best Service to Customers!

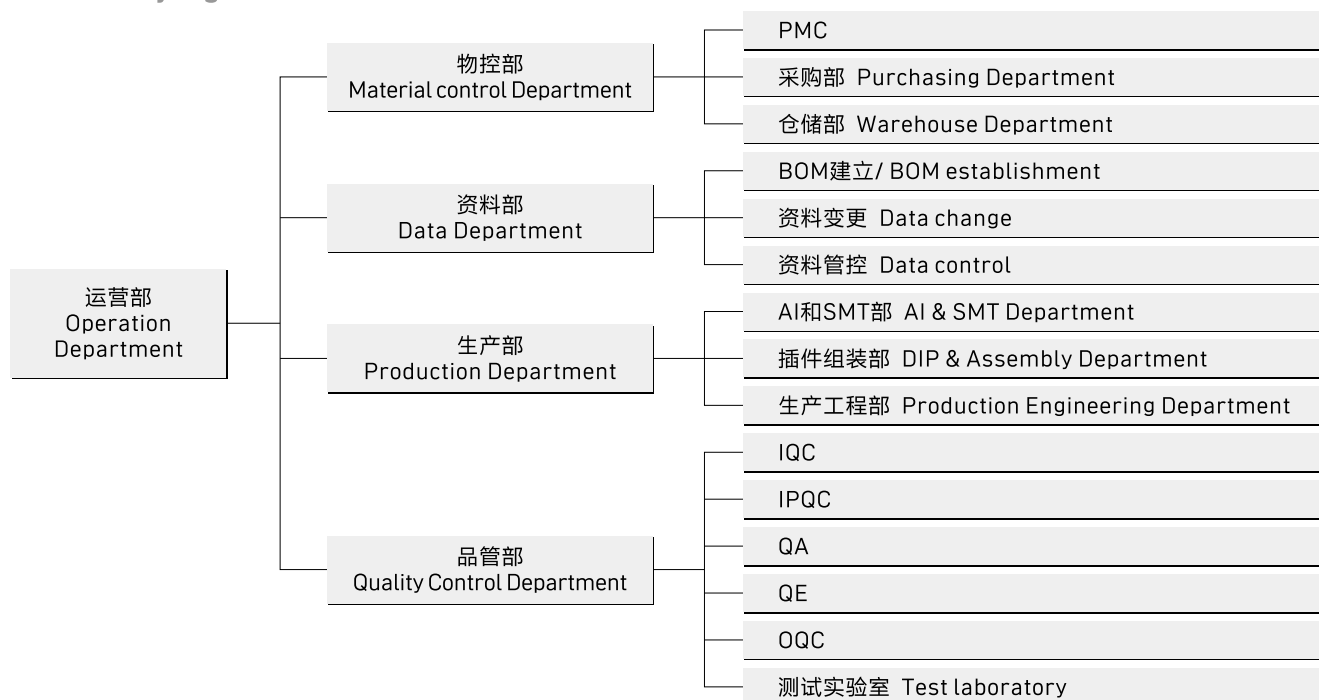
集团管理架构

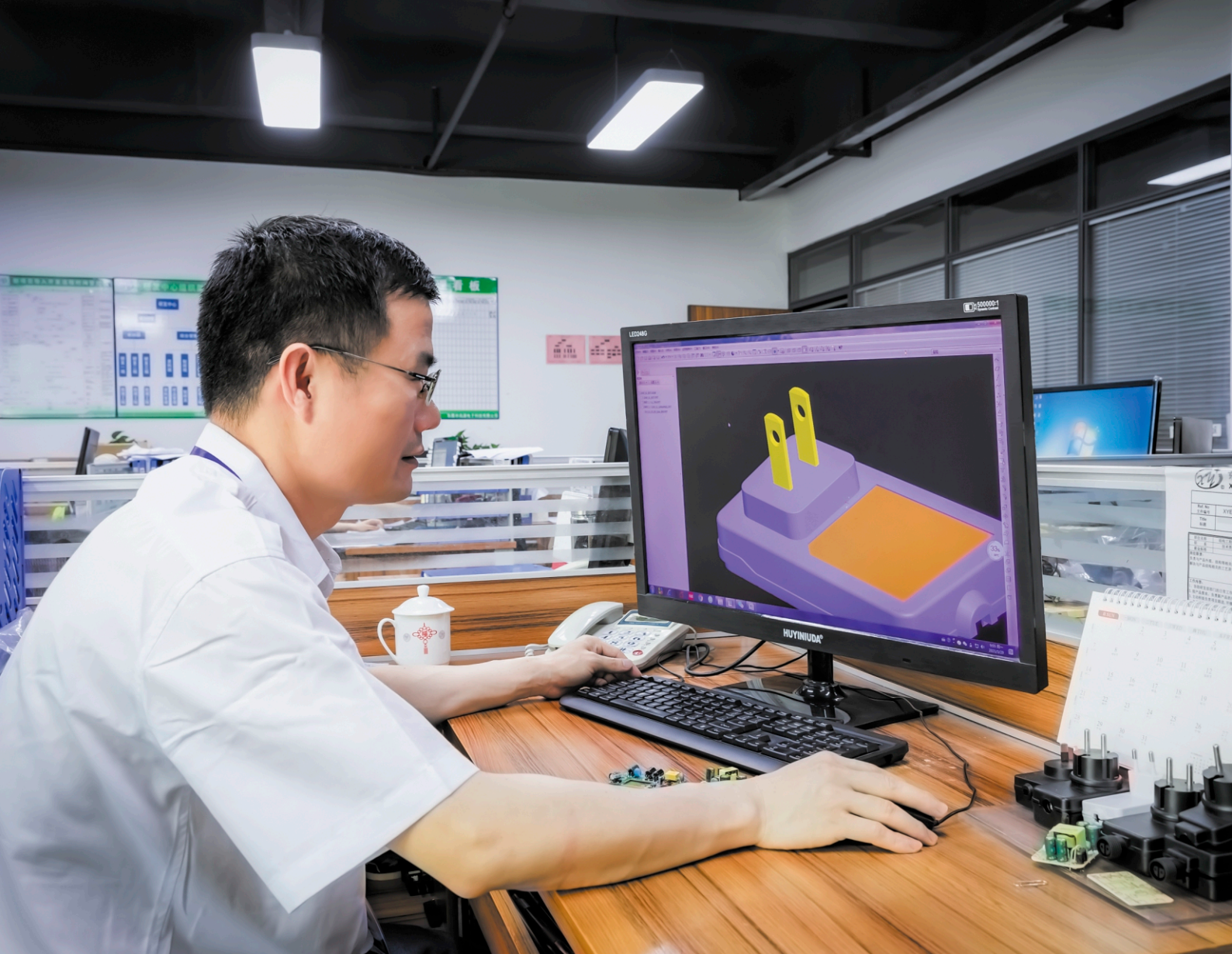
Group Management Culture



各分工厂管理架构

Each factory organization chart





自主研发， 保持行业领先水平！

Independent research
and development &
continue to keep ahead
in the industry

自主研发，产品适用于LED照明、IT、AV、安防、通信类设备。
采用CAD、PDM、PLM技术，对产品进行设计管理。

Independent research and development, such power supplies are
widely applied to the industries of LED lightings, IT products,
CCTV cameras, Audio & Video communication devices and so on.
Use CAD、PDM、PLM technology to design and manage products.

研发能力

R & D Capability



研发能力讯源拥有强有力的产品研发团队，现有研发人员达30人，5到10年研发经验的资深工程有10人，保证了产品的设计可靠性和周期；研发测试、验证设备齐全，全部采用知名品牌（Tectronix、Agincent、Fluck、Chrona）保证了各项数据的正确和精密性。

We have a powerful R&D team including 30 engineers and 10 senior engineers with 5 to 10 years' experience. Therefore, our design's reliability can be insured and the development cycle can be shortened. With a range of multiple testing machines from brands like Tectronix, Agincent, Fluck, Chrona, the data's accuracy can also be insured.

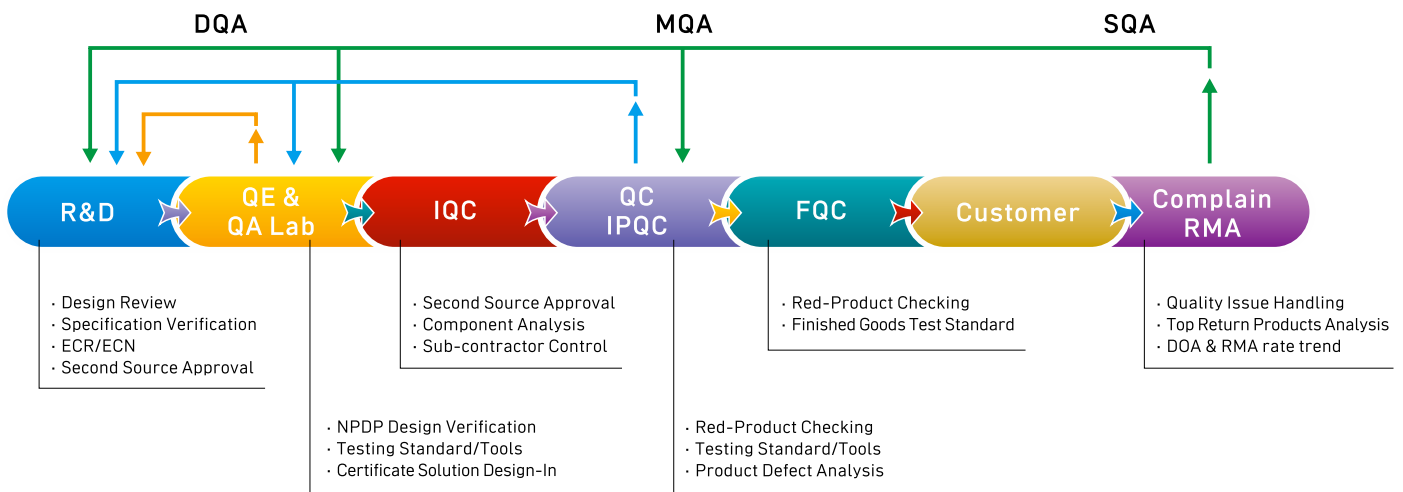


完善的质量管控体系 严格的出厂检测以确保产品质量

Reasonable quality control system & strict inspection standard



Good Quality Control



检测设备

Testing Equipments

讯源注重用户安全，公司产品的设计都符合各国安全标准，并且都经过严格的安规测试。公司斥巨资从国外购入了一批最先进的检验检测设备，其中包括日本横河功率计WT310、示波器DPO3014、数据采集系统G10、微电脑恒温恒湿机、科环EMI测试仪KH3929以及静电、雷击等相关测试设备。

Xing Yuan pay attention to users' safety. All the products are made per safety standard with strict tests. We invest a large amount of money into purchasing advanced equipments from overseas. Such as Power Meter WT310, Oscilloscope DPO3014, Data Collection System G10, Constant Temperature and Humidity Test Machine, EMI Tester DK3929, ESD Tester, Surge Tester and so on.



研发实验室
R&D Lab



传导
EMC Tester



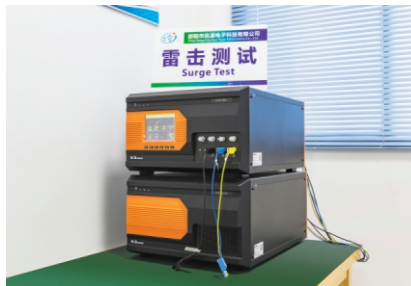
谐波
Harmonic Tester



示波器
Oscilloscope



点温
Temperature rise tester



雷击
Surge Tester



静电测试
ESD Tester



高压测试
Hi-pot Tester



恒温恒湿
Constant temperature and humidity equipment



一流的现代化生产车间，完善的制造工艺与流程

First-class and modern workshop, Perfect manufacturing process

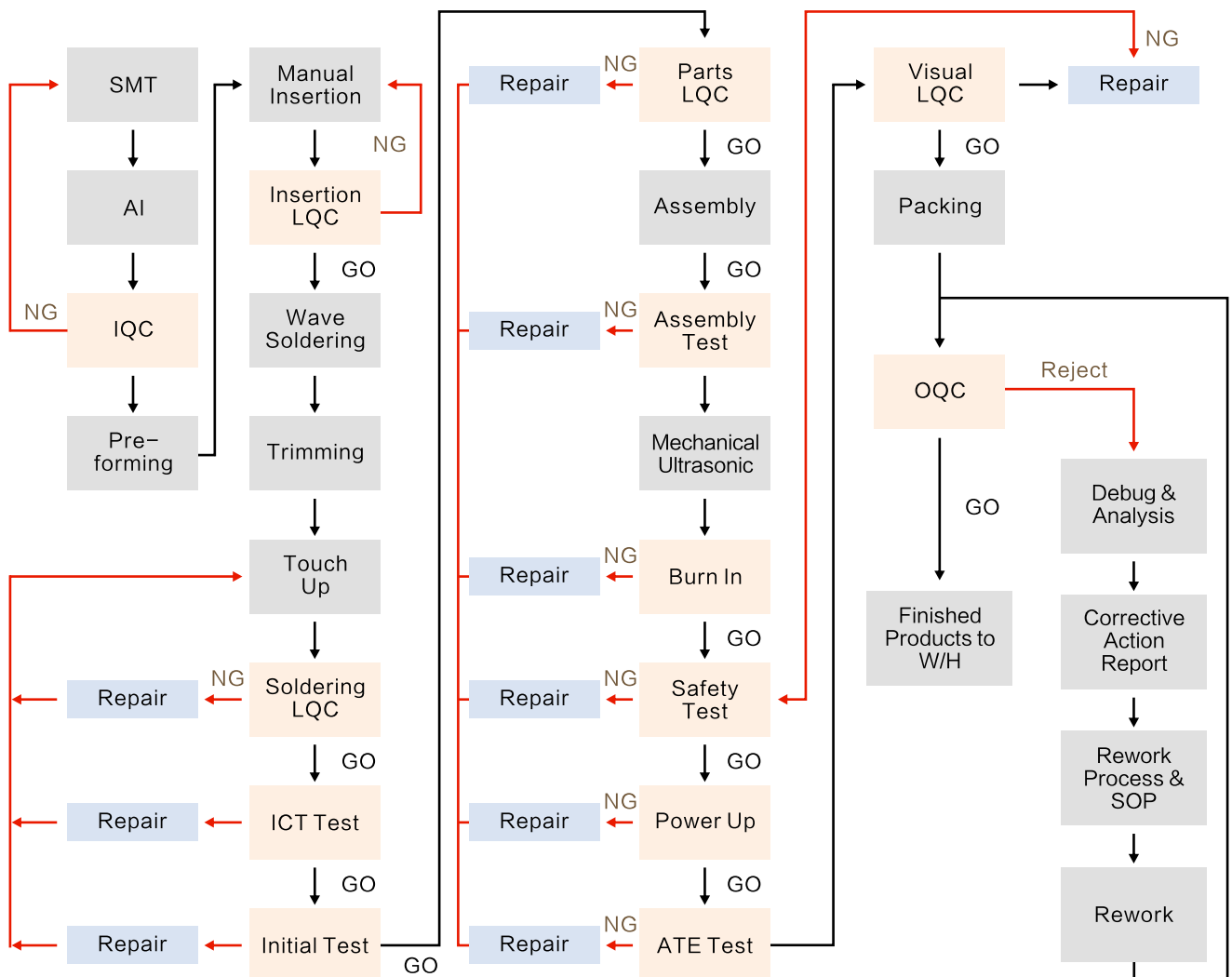
公司现有电源车间、A/I车间，SMT车间，注塑车间，各车间均配备完善先进的生产、测试及检验设备，电源成品月产能达100万只/月。

We have workshops for 4 aspects: power supply, A/I, SMT, Injection Molding. Each workshop is equipped with advanced testing and inspecting equipments. Our monthly capacity can reach 1 million of power units.



生产车间

Production Workshop





自动化生产车间 | Automation Production Workshop

设备自动化程度高，居国内同行业先进水平，插件、贴片生产工艺均采用电脑全自动控制，客户定制类电源每月可达100万台，产品种类多，品种齐全，可以满足不同层次客户对各种产品的需求。

Our automatization level is higher than the average level in the industry. For example, the process of SMT is controlled by computer system. As a result, we can meet different customers' requests of various products in 1 million pcs every month.



生产车间

Production Workshop





东莞市讯源电子科技有限公司

地址：广东省东莞市石排镇燕窝村路33号
电话：0769-8229 1180
传真：0769-8262 0212
邮箱：ivy@dgxingyuan.com

邵阳市讯源电子科技有限公司

地址：湖南省邵阳市双清区宝庆工业园

惠州市讯源电子科技有限公司

地址：广东省惠州市博罗县园洲镇
上南工业区民营三路11号
电话：0752-662 0851 / 589 5083
传真：0752-662 0852
邮箱：nicolexy@dgxingyuan.com

网址：www.dgxingyuan.com

XING YUAN ELECTRONICS CO.,LTD

ADD: No.33 of Yanwo Village Road, Shipai Town,
Dongguan City, Guangdong Province, China
TEL: +86-769-8229 1189
FAX: +86-769-8262 0212
E-mail: ivy@dgxingyuan.com

XY POWER SUPPLY LIMITED

ADD: Baoqing Industrial Park, Shuangqing District,
Shaoyang City, Hunan Province, China

XUN WINR ELECTRONICS CO., LTD

ADD: MingYing Road, Shangnan Industry Area,
Yuanzhou Town, Huizhou City,
Guangdong Province, China
Tel: +86-752-662 0851 / 589 5083
Fax: +86-752-662 0852
E-mail: nicolexy@dgxingyuan.com

Website: www.dgxingyuan.com



中文网页



English Website